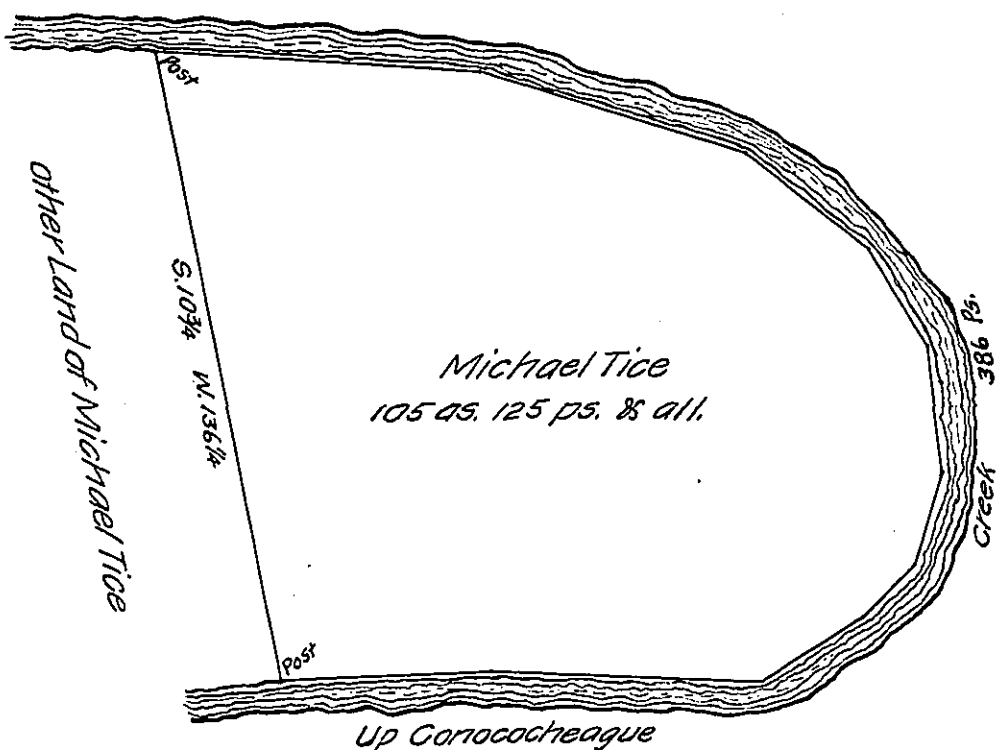


Courses up Corococheague Creek Beg. at a post

S. 70½ E. 46
S. 66 E. 60
N. 80 E. 26
N. 68½ E. 16
N. 40 E. 20
N. 15 E. 29
N. 10 W. 24
N. 32 W. 32
N. 51 W. 63
N. 65 W. 70
386



Draught of a Tract of Land situate in Montgomery Township Franklin County containing one hundred and five Acres and one hundred and twenty-five perches and allowance of Six 7/8 Ct. for Roads. Surveyed the 3rd day of January 1817 in pursuance of a warrant granted Michael Tice for 100⁰ Dated the 27th day of August 1816.

*Richd T. Leech, Esq^r } Archd Fleming, D. S.
Surveyor General of Penna. }*

N. B. The warrant for the above calls for an improvement but does not say what time interest is to commence, as the improvement is very old. Interest I suppose will have to commence in 1755. A. F.

IN TESTIMONY that the above is a copy of the original remaining on file in the Department of Internal Affairs of Pennsylvania, made conformably to an Act of Assembly approved the 16th day of February, 1833, I have hereunto set my Hand and caused the Seal of said Department to be affixed at Harrisburg, this eighteenth day of October, 1907.

Henry Howard
Secretary of Internal Affairs.